

DIABLO II

HOW TO DEAL WITH UNHANDLED EXCEPTION: ACCESS VIOLATION (C0000005) BY KARAKAZ

* FIRST UP: WHAT IS IT? WHAT DOES IT MEAN?

FROM A SYSTEMS ANALYST AT MICROSOFT:

"A C0000005 Error is a Windows System error. It is an Exception Error that occurs when a process (application, driver, etc.) tries to execute a processor command that references memory outside the space allocated to that process by the Operating System.

There are many possible causes ranging from corrupt data tables, to a bad network connection, ActiveX controls, or Printer or Video driver errors. Without knowing what type of error you are seeing, it is impossible to guess what the cause may be."

AS WE CAN SEE BY READING THE DESCRIPTION, THE CAUSE IS UNKNOWN AND CAN REALLY BE FROM ANYWHERE. ALTHOUGH IT IS USUALLY RELATED WITH THE GRAPHICS OR AUDIO, I'VE ALSO HEARD IT SPAWNS WHEN ONE IS TRYING TO CONNECT WITH BATTLE.NET.

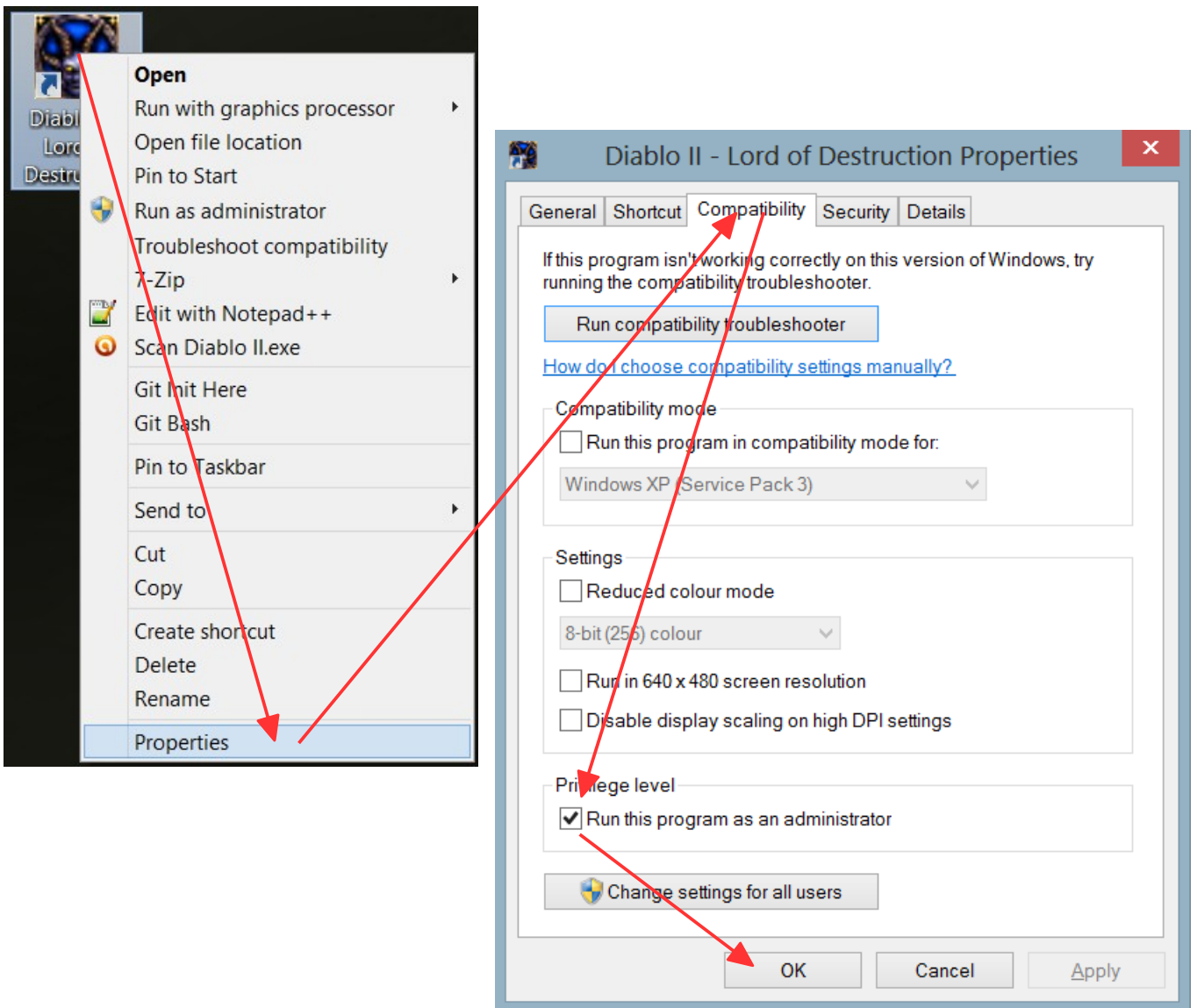
* THINGS TO CONSIDER BEFORE TRYING THE SOLUTIONS

- MAKE SURE THAT YOUR ANTI-VIRUS SOFTWARE / FIREWALL IS NOT PREVENTING DIABLO II FROM RUNNING OR COMMUNICATING.
- MAKE SURE THAT YOU HAVE THE LATEST PATCH OF DIABLO II <https://us.battle.net/support/en/article/classic-game-patches>
- MAKE SURE THAT YOUR VIDEO DRIVERS ARE UP TO DATE
- CONSIDER REINSTALLING DIABLO II, FILES MIGHT BE DAMAGED
- RUN WINDOWS UPDATE TO MAKE SURE YOU HAVE THE LATEST SERVICE PACK AND UPDATES
- CONSIDER REINSTALLING DIRECTX, IT MIGHT BE DAMAGED

* METHODS WHICH CAN SOLVE THE PROBLEM:

- **RUNNING AS ADMIN**

THIS SHOULD BE ENABLED AT ALL TIMES.

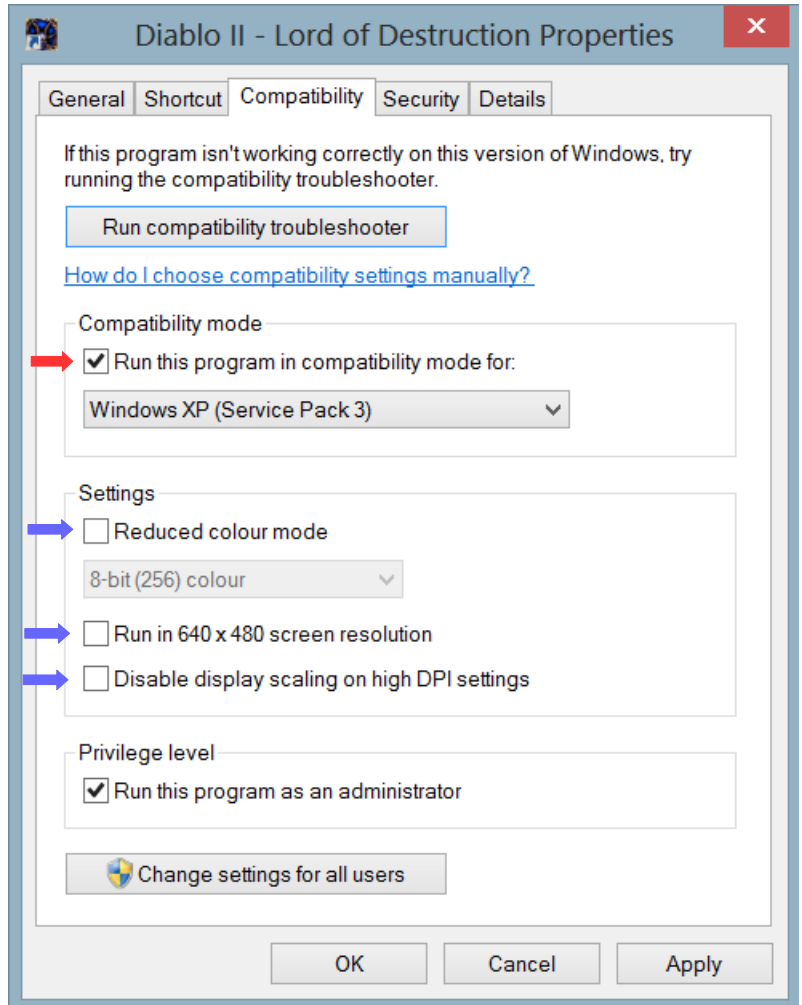


IF THIS DIDN'T SOLVE IT AND YOU ARE RUNNING WINDOWS 8 I RECOMMEND THE SOLUTION ON PAGE 5, THAT IS THE ONE I'M USING AND IT SHOULD WORK FOR YOU TOO

• **COMPATIBILITY MODE**

CHECK "RUN THIS PROGRAM IN COMPATIBILITY MODE" IN COMPATIBILITY MODE

SEE IF IT WORKED, IF NOT, IT MIGHT WORK IN A COMBINATION WITH ONE OR MORE OF THE BLUE ARROWS



• **RUNNING WITH PARAMETERS:**

ONLY ONE AT A TIME

-O PENGL

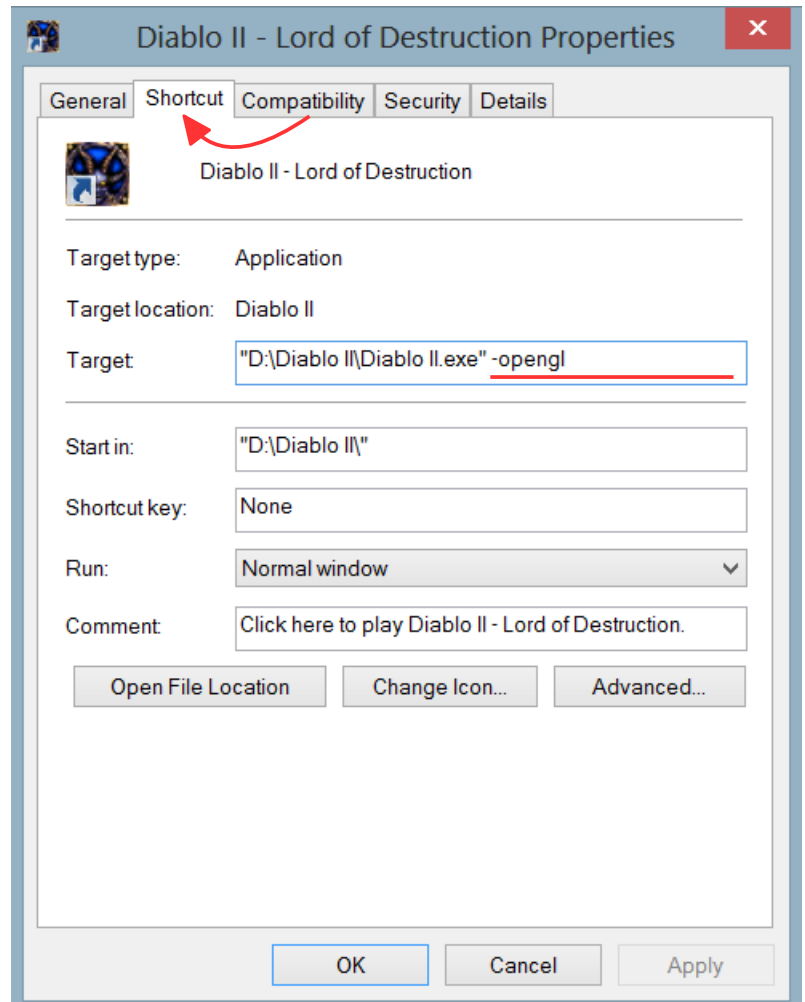
WILL USE O PENGL INSTEAD OF DIRECTX

-W

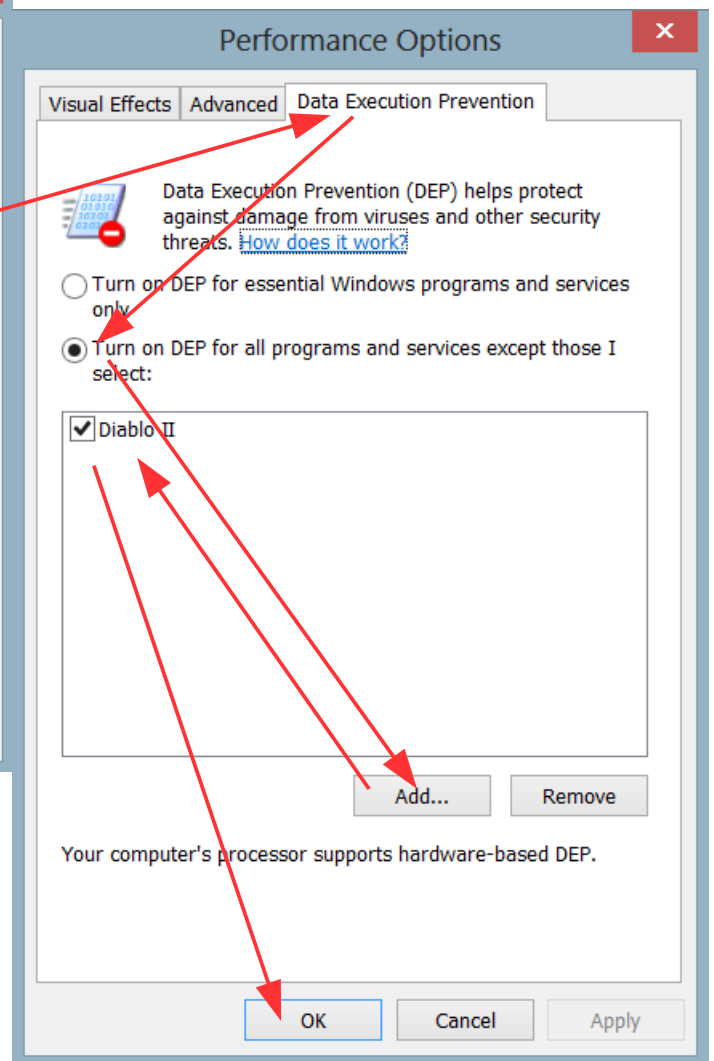
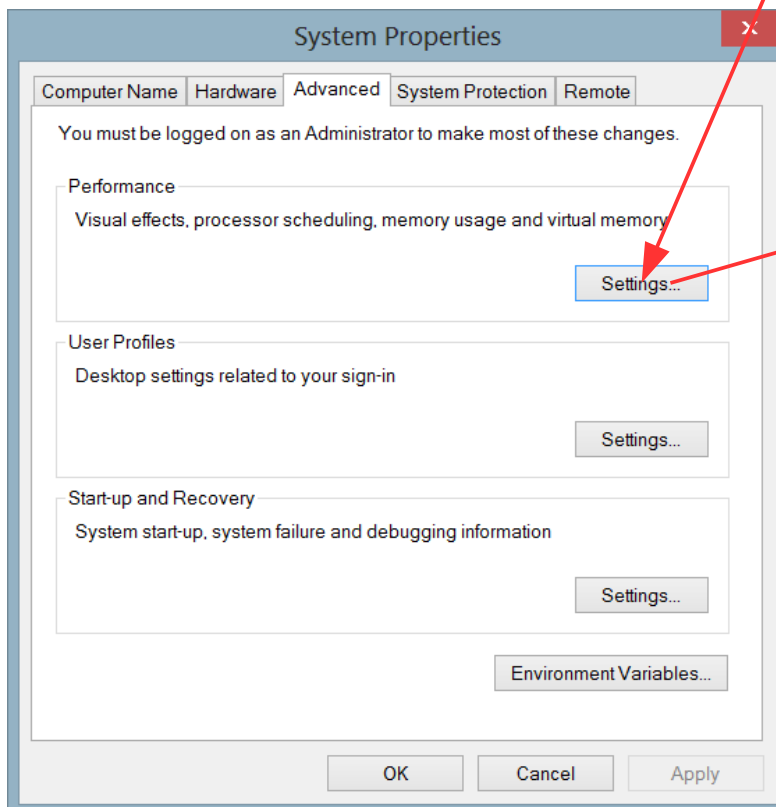
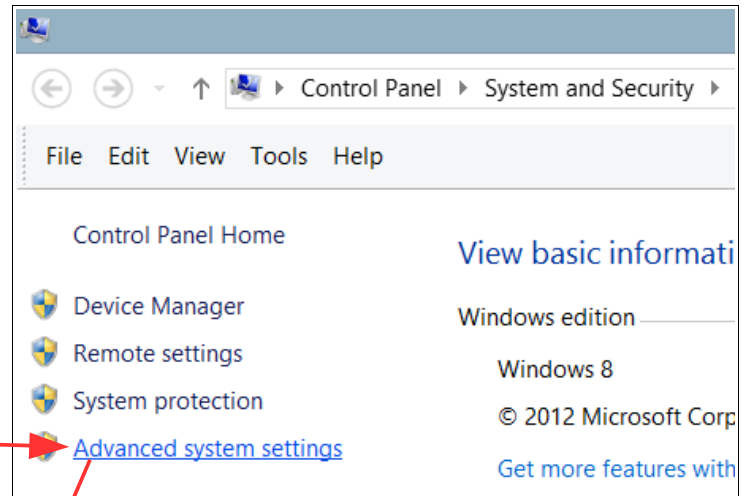
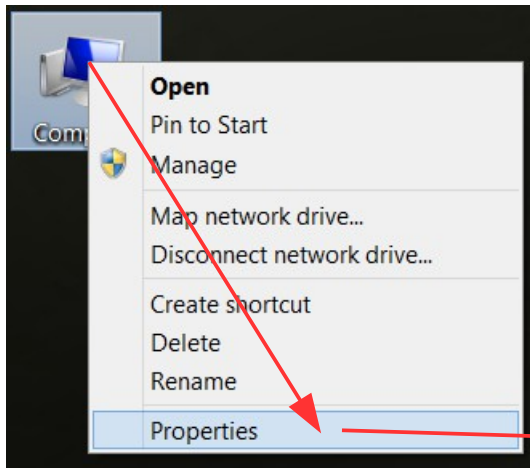
WINDOWED MODE (IF THIS WORKS BUT YOU WANT TO PLAY FULLSCREEN, GO TO PAGE 7 TO MAKE THAT HAPPEN)

-NS

DISABLES SOUND



- ALLOWING DIABLO II TO RUN EVEN MORE FREELY BY ADDING AN EXCEPTION FOR IT IN THE OS'S DEP LIST



WHEN YOU "ADD...", LOCATE THE DIABLO II.EXE AND ADD IT

MIGHT ALSO WORK WITH THE GAME.EXE, NOT SURE

• USING A GLIDE TO OPENGL WRAPPER (RECOMMENDED SOLUTION)

IN THIS SOLUTION WE'LL BE USING THIRD PARTY SOFTWARE MADE EXCLUSIVELY FOR DIABLO II TO SOLVE ISSUES RELATED WITH IT'S GRAPHICS, IT IS CALLED 'GLIDE-TO-OPENGL-WRAPPER' AND IS MADE BY THE KIND GEN+LEMAN SVEN LABUSCH.

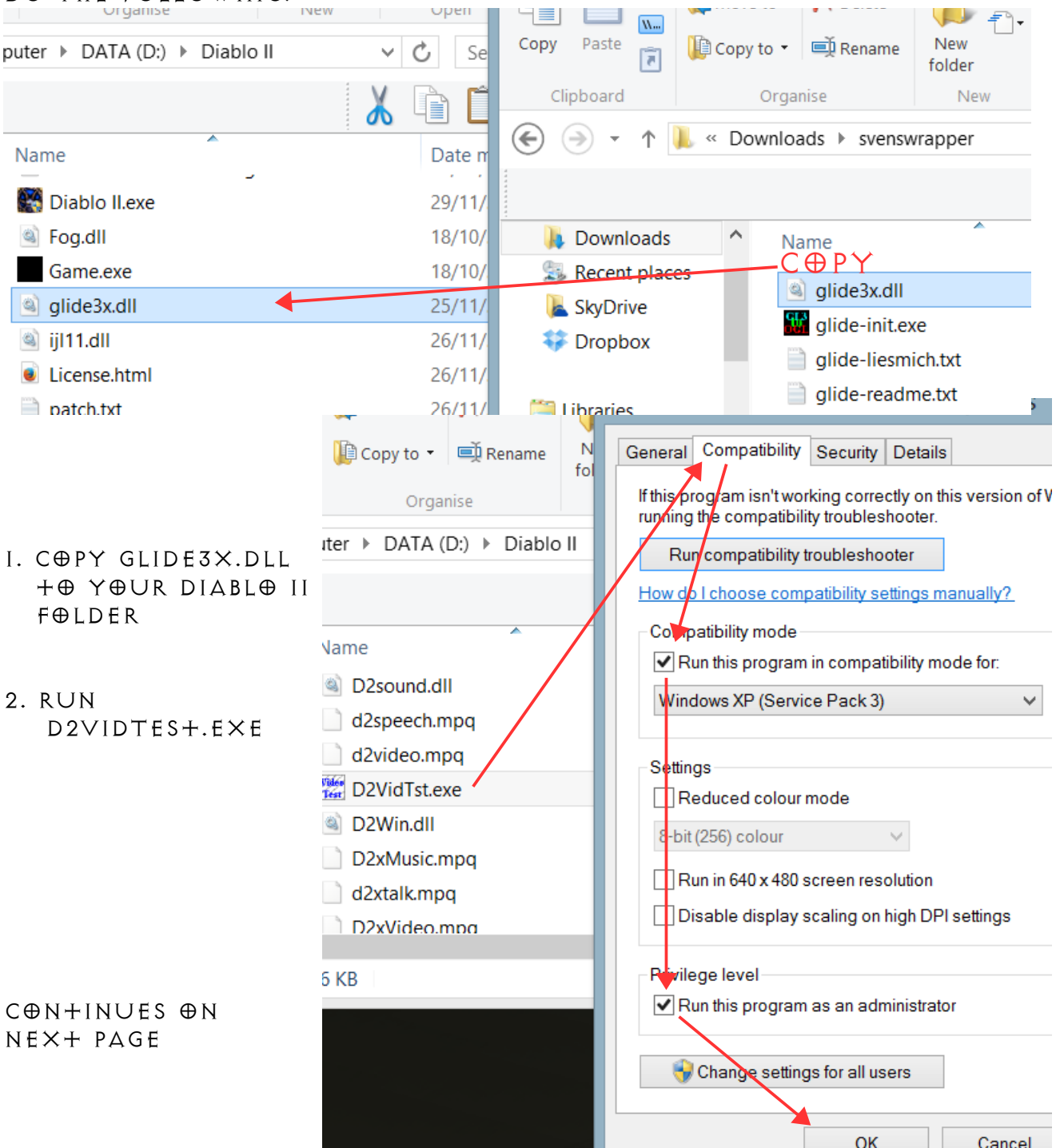
MAIN PAGE

<http://www.svenswrapper.de/english/index.html>

DOWNLOAD THE LATEST VERSION FROM

<http://www.svenswrapper.de/english/downloads.html>

ONCE YOU HAVE DOWNLOADED AND EXTRACTED THE FILES, DO THE FOLLOWING:



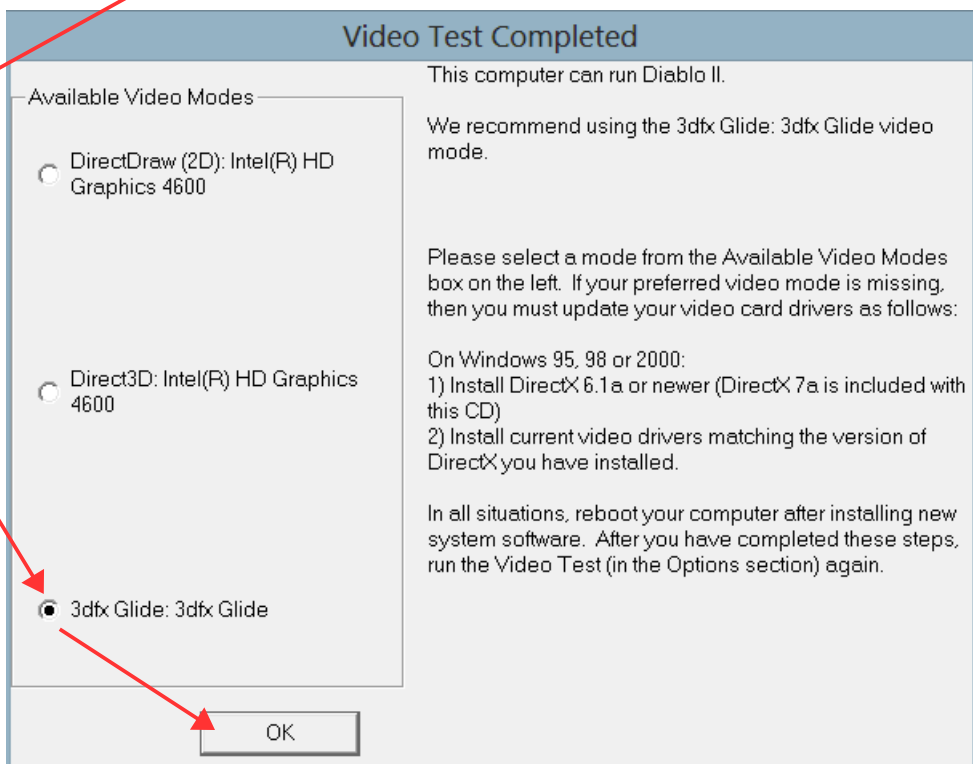
1. COPY GLIDE3X.DLL TO YOUR DIABLO II FOLDER

2. RUN D2VIDTES+.EXE

CONTINUES ON NEXT PAGE

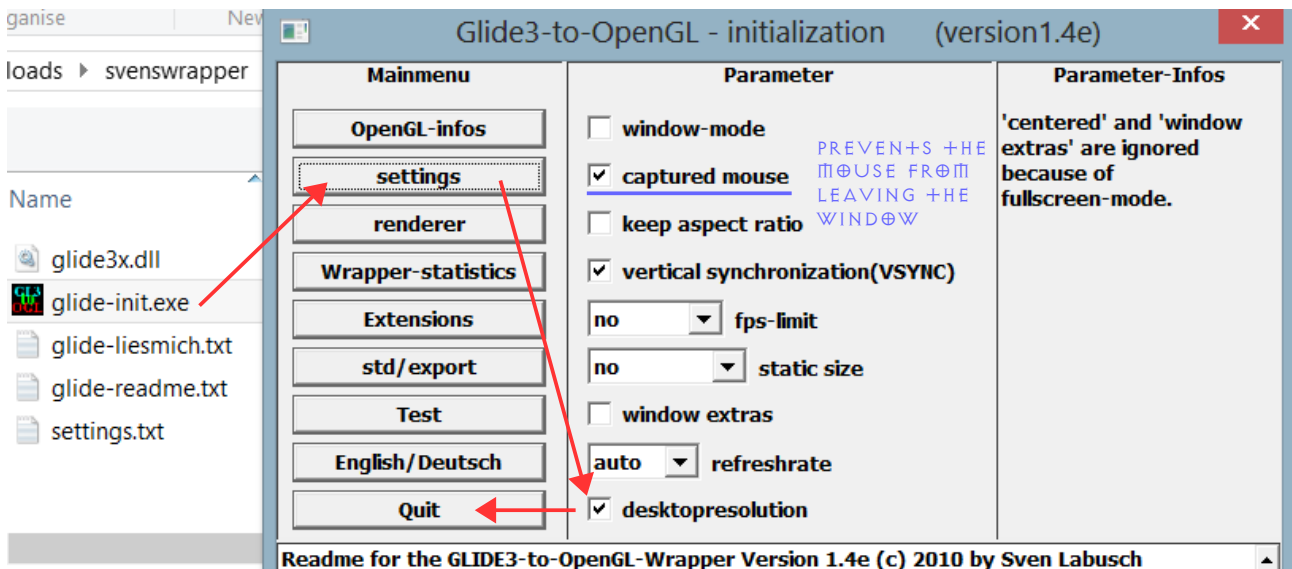


COMPLETE
+ES+



FINISHED!

IF YOU WANT TO STRETCH DIABLO TO FILL THE SCREEN, DO THE FOLLOWING



- **PLAYING IN FULLSCREEN WINDOWED MODE**
(ONLY WORKS IF THE PARAMETER -W WORKED)

THIS METHOD USES THIRD PARTY SOFTWARE TO ALLOW YOU TO PLAY IN WINDOWED MODE WITHOUT THE UGLY WINDOWS BORDERS. IT CAN ALSO RESIZE THE WINDOW SO YOU CAN PLAY FULLSCREEN :)

THE SOFTWARE NEEDED:

WINDOWED BORDERLESS GAMING, BY [Hellstrong](#)

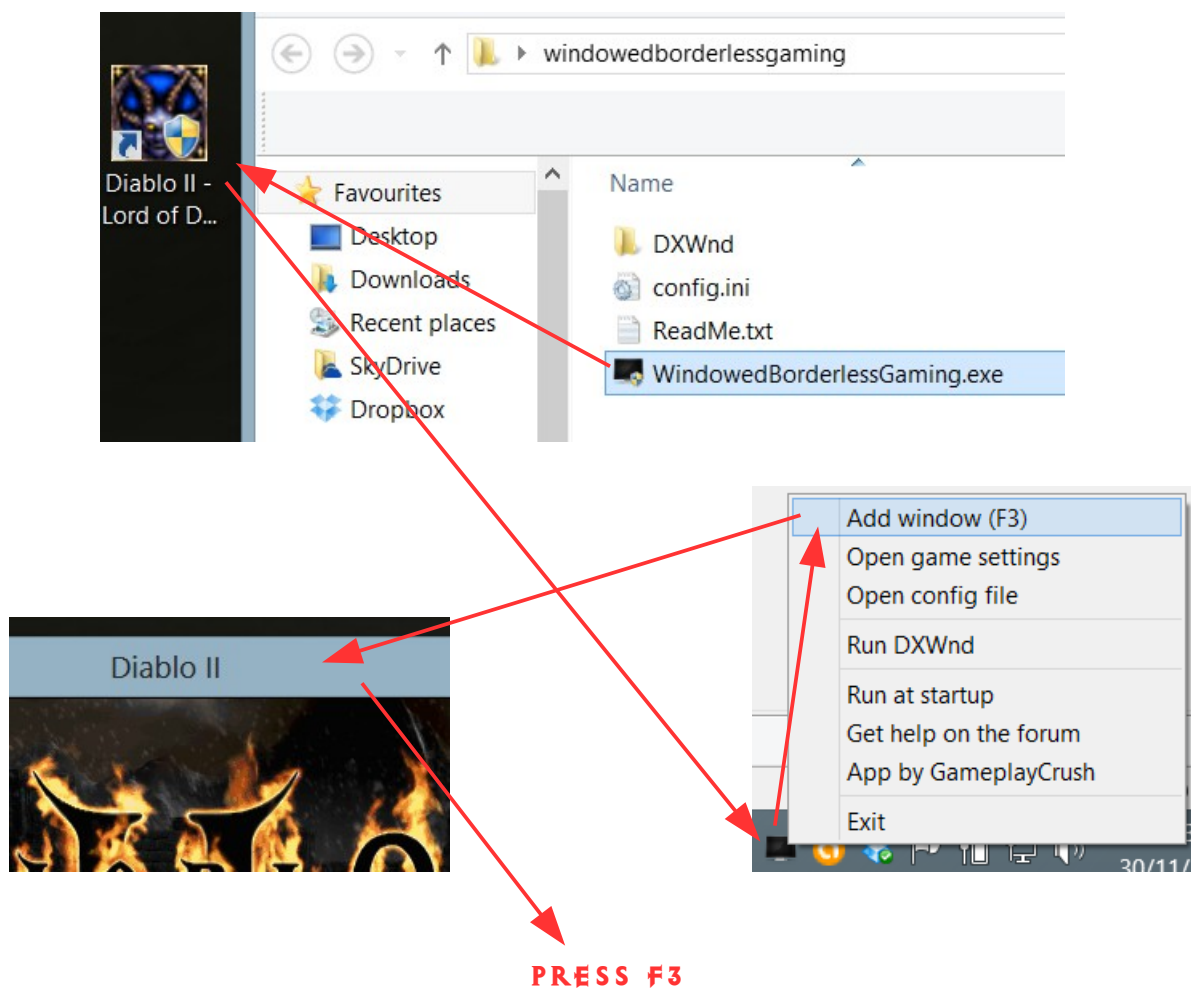
DESCRIPTION

<http://forums.steampowered.com/forums/showthread.php?p=30525996>

DOWNLOAD (GO TO DESCRIPTION IF THIS LINK IS BROKEN)

gc-modding.googlecode.com/files/WindowedBorderlessGaming_1.1.1.4.zip

OK, WE'RE READY TO BEGIN!

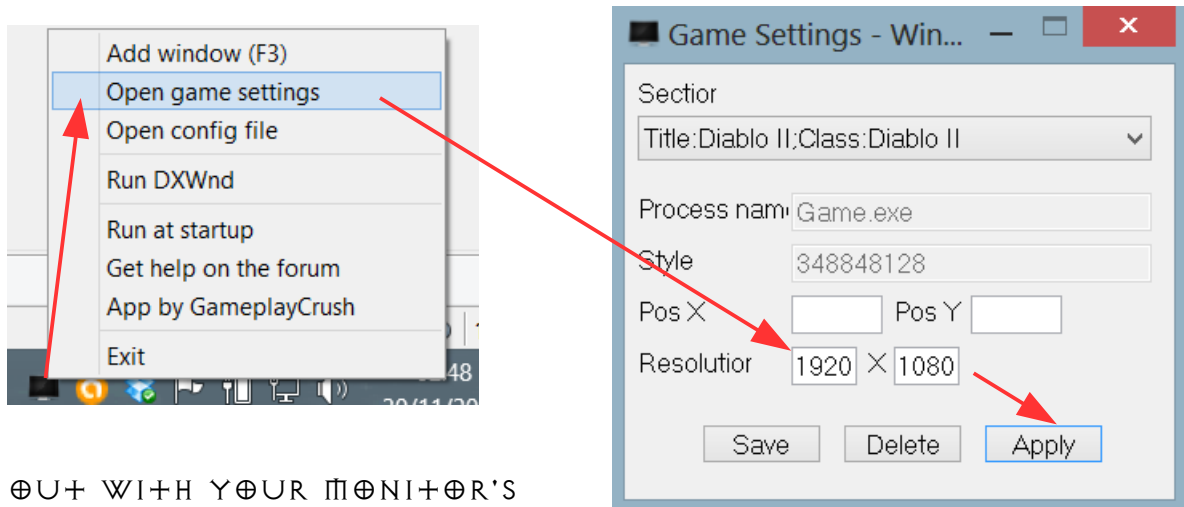


THE WINDOWS BORDERS SHOULD NOW DISAPPEAR

CONTINUES ON NEXT PAGE

NEXT WE WANT TO RESIZE THE WINDOW TO MAKE IT FULLSCREEN

RIGHTCLICK THE SOFTWARE'S TRAY ICON AND CLICK "OPEN GAME SETTINGS"



FILL OUT WITH YOUR MONITOR'S RESOLUTION OR WHICHEVER YOU PREFER. ENJOY.

* LAST NOTES

THIS CONCLUDES THE GUIDE FOR ERROR C0000005, IF YOU ARE STILL EXPERIENCING THIS ERROR. I FEEL SORRY FOR YOU, I REALLY DO. BUT IF YOU STILL ARE DETERMINED TO FIX THIS, I CAN ONLY COME UP WITH ONE LAST RESORT. THAT IS, RUNNING A VIRTUAL MACHINE WITH WINDOWS XP FOR EXAMPLE AND PLAY IT THAT WAY. FORTUNATELY THERE ARE MANY GUIDES ON THE INTERNET FOR HOW TO SET UP VIRTUAL MACHINES, SO I WON'T BE GOING THROUGH THAT PROCESS IN THIS GUIDE. BUT I WISH YOU GOOD LUCK AND I HOPE TO SEE YOU IN-GAME. THAT IS, ON SLASHDIABLO'S SERVER OF COURSE!

* ADDITIONAL LINKS

ALL PARAMETER OPTIONS FOR DIABLO II:

http://diablo2.diablowiki.net/Game_commands

BEST DIABLO II LOAD VANILLA SERVER, NO BOTS AND LADDER RESET EVERY 6 MONTHS, NEXT IS DEC.20.2013

<http://www.reddit.com/r/slashdiablo/>

http://www.reddit.com/r/slashdiablo/comments/lpgtw/slashdiablo_server_faq/

PAGE WITH MORE USEFUL LINKS:

http://www.reddit.com/r/slashdiablo/comments/pgzr/slashdiablo_index_of_guides_and_resources/